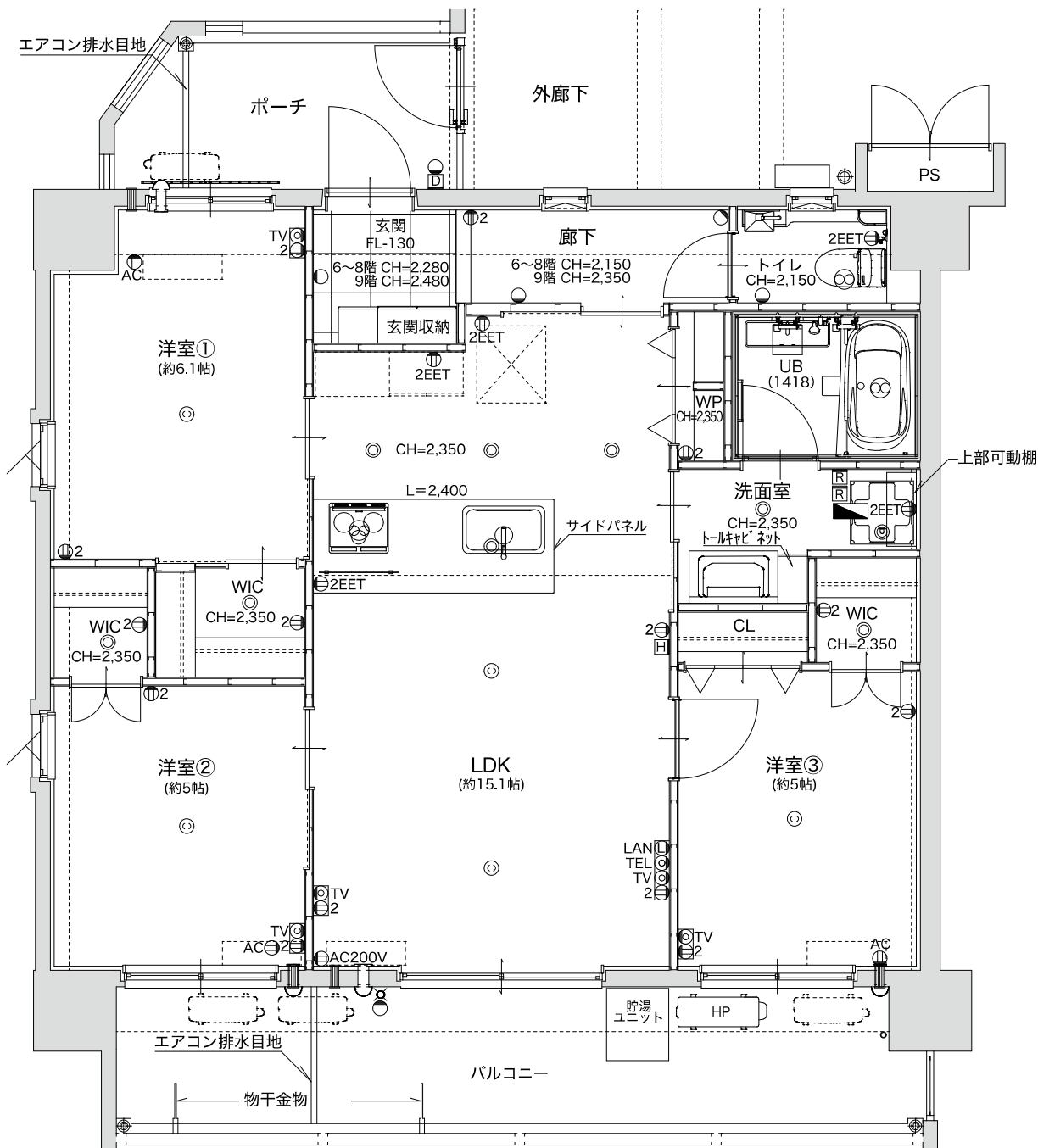
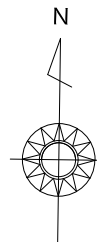
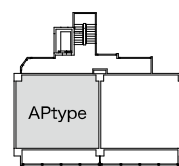
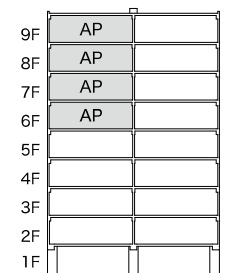


専有面積 / **71.10** m<sup>2</sup> (21.50 坪)  
 バルコニー / 14.16 m<sup>2</sup> (4.28 坪)  
 ポーチ / 6.25 m<sup>2</sup> (1.89 坪)

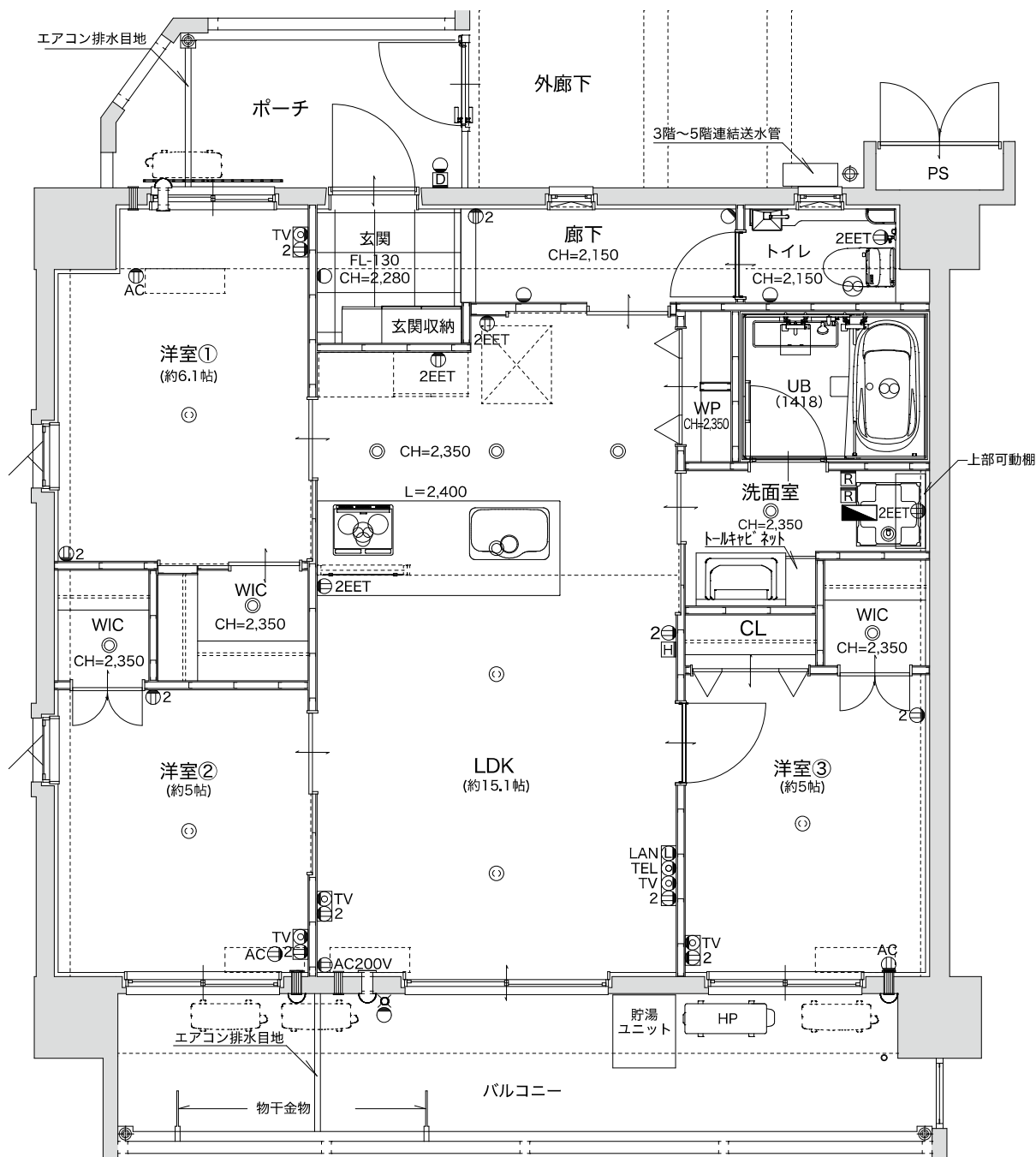
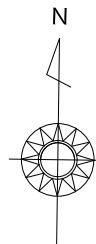
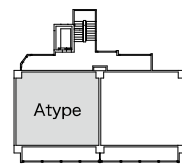
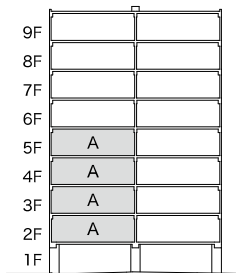
scale : 約 1/65

※ 特記なき天井高さ  
 6~8階 : 約 2,620  
 9階 : 約 2,500



専有面積 / 71.10 m<sup>2</sup> (21.50 坪)  
 バルコニー / 14.16 m<sup>2</sup> (4.28 坪)  
 ポーチ / 6.25 m<sup>2</sup> (1.89 坪)

scale : 約 1/65



専有面積 / 71.10 m<sup>2</sup> (21.50 坪)  
 バルコニー / 14.16 m<sup>2</sup> (4.28 坪)  
 ※2階のみ / 15.30 m<sup>2</sup> (4.62 坪)  
 ポーチ / 8.99 m<sup>2</sup> (2.71 坪)

scale : 約 1/65

